



**ZODIAC**  
**KEEP EXPLORING**



– ENGLISH –

# WHY A RIB?



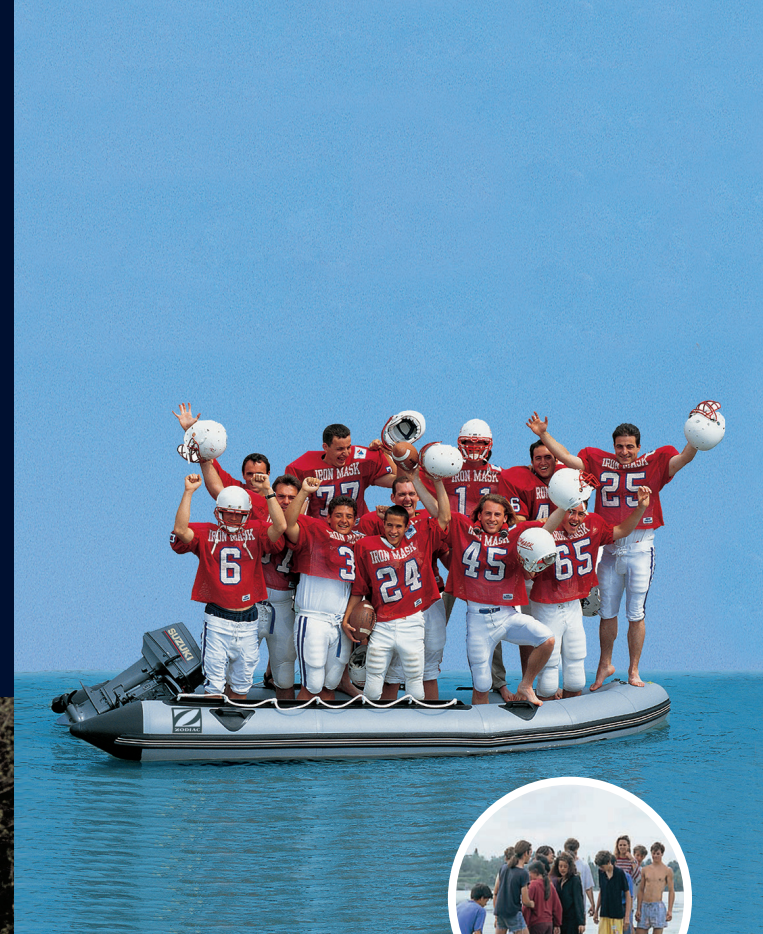
## SECURITY

The tubes of Zodiac boats have several chambers separated by waterproof partitions. Due to its all-important air reserves, the boat retains its ability to float and is virtually unsinkable when fully loaded – even in the event of a deflated chamber.



## REASSURING STABILITY

With buoyancy equally distributed and a low centre of gravity, Zodiac boats are almost impossible to capsize when fully loaded.



## EXCEPTIONAL LOAD

You're right, there are 12 football players onboard this Zodiac boat! With exceptional weight to area-below-water ratio, Zodiac boats have a considerable load-bearing capacity.



© Gérard Garnier, Futura 1987, 55 knots

## REMOVABLE TUBES : A ZODIAC EXCLUSIVE

Built-in fenders mean less stress when docking. The boat will simply bounce without damage if it happens to tap a dock or neighbouring boat in the harbour.



The tube is entirely removable and can be taken apart and folded to allow for easier transportation, storage, maintenance and repair.

## CHANGING YOUR TUBES?

There is nothing easier. The tubes can be removed from the hull which is ideal to renovate or restyle your boat for less.

## POWER

RIBs consume less fuel thanks to their power-to-weight ratio and a smaller horsepower engine is required to deliver the same performance as a traditional hull.

## MORE ECONOMICAL AND PRACTICAL

When buying and maintaining a boat, semi-rigid is less expensive than a hull and, in most cases, a large truck is not required to tow it.





# BENEFITS OF A RIB



**A TRUE 4X4  
OF THE SEA**

# MORE CAPABLE

The unique combination of a very low centre of gravity, a deep-v hull and added stabilisation gives RIBs impressive speed and sea-crossing capabilities without compromising on comfort or safety.



PRO 850 CUSTOM



# QUALITY

## THE HULL

An internal structure of rot resistant polyester built with a spar and floors network guarantees a single block link between the hull and deck. This results in rigidity and resistance performance in all load conditions.

## THE TUBES

Zodiac Nautic developed a unique process to assemble its tubes: thermobonding. This process consists of welding together pieces of Strongan™ to offer a material that is both waterproof and durable – almost indestructible. Zodiac is the only manufacturer to master welding together all structural materials of an inflatable boat, therefore guaranteeing exceptional longevity and security.



## QUALITY TEST

Zodiac Nautic carefully selects all materials built into its boats adhering to strict functional specifications. Zodiac is also the only manufacturer to subject every individual boat to a series of extreme condition tests. Your Zodiac boat is sure to last.





As the inventor of inflatable boats and 120 years of experience, Zodiac Nautic offers RIBs with exceptional resistance and reliability by using materials and processes that are always at the cutting edge of technology.



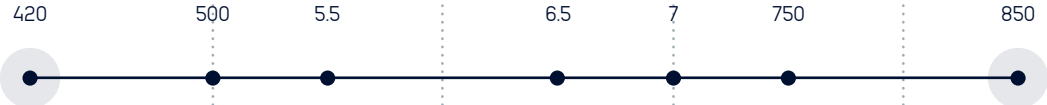
# RANGE

RIGID-HULLED INFLATABLE

## PRO À la carte



3 METERS      4 METERS      5 METERS      6 METERS      7 METERS      8 METERS      9 METERS



## OPEN All-in-one



## MEDLINE Private oasis



## N-ZO Premium cruising



ELECTRIC RIB

## eJET 450 Without oil, without fuel, without maintenance





12

**PRO**  
Custom mode



36

**MEDLINE**  
Private oasis



24

**OPEN**  
All-in-one



46

**N-ZO**  
Premium cruising

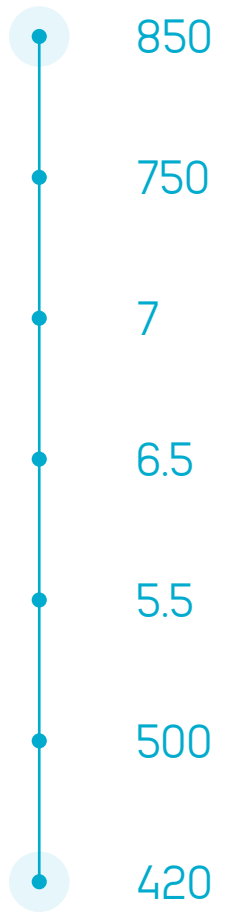


52

**eJET**  
100% electric

# PRO

## CUSTOM MODE



Practical | Adaptable | Diverse





PRO 7



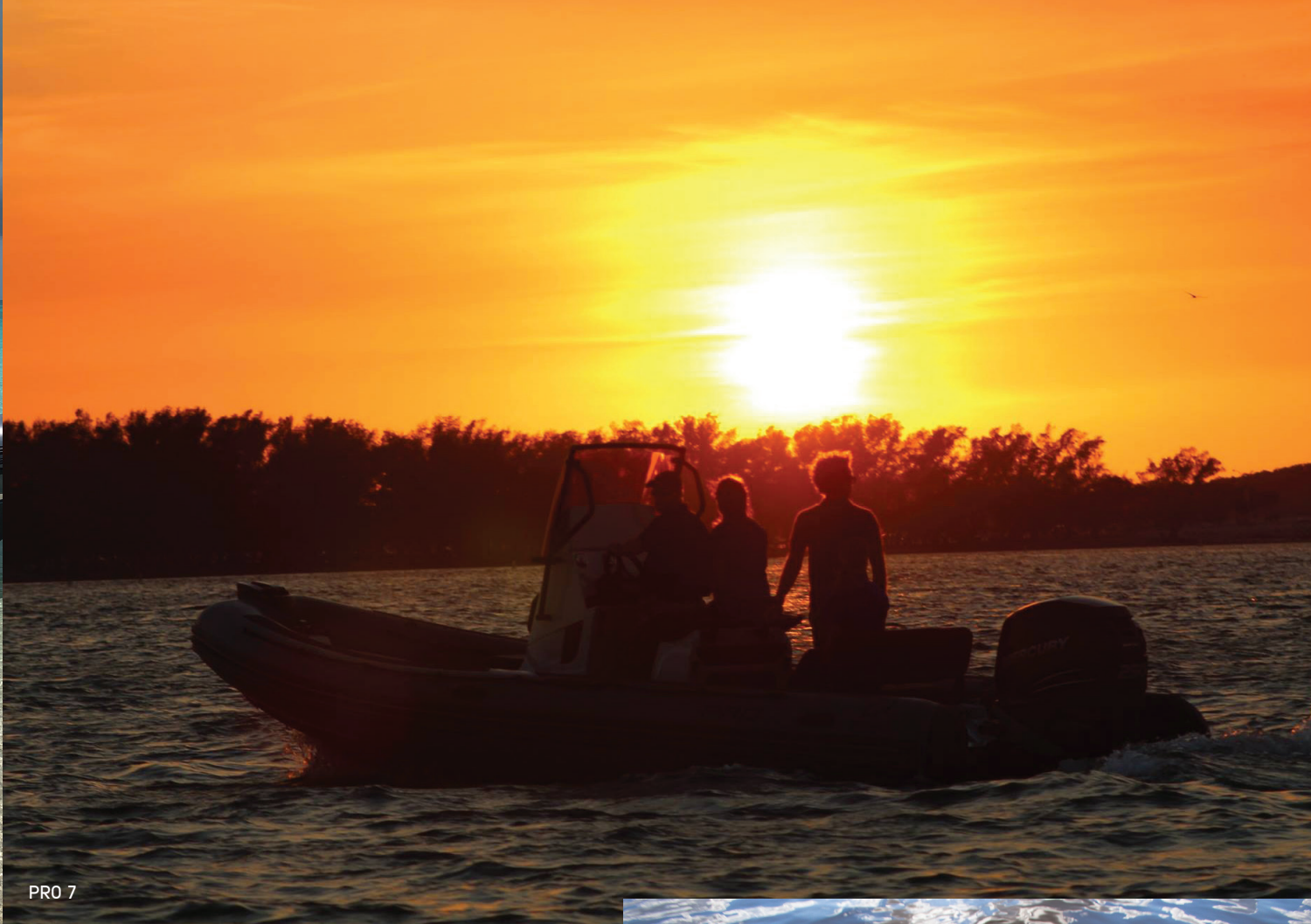
PRO 5.5



PRO 5.5



PRO 7



PRO 7



PRO 5.5

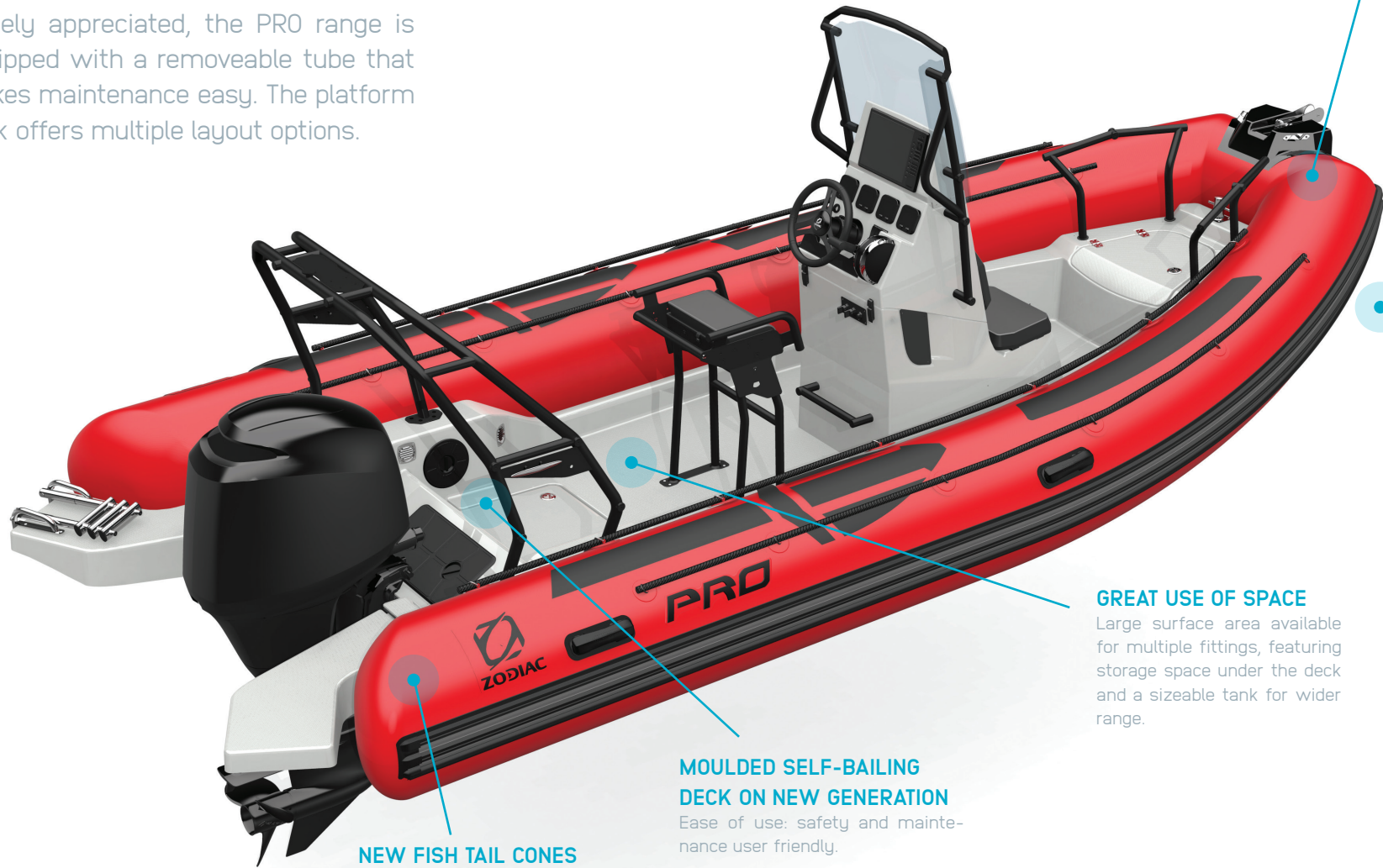


PRO 5.5

PRO

# PRACTICALITY

Widely appreciated, the PRO range is equipped with a removable tube that makes maintenance easy. The platform deck offers multiple layout options.



## WIDE DIAMETER REMOVABLE TUBE

Stable with a hollow inside.

## DEEP V-SHAPED FIBER GLASS HULL

Comfort and high performance on heavy seas.

## GREAT USE OF SPACE

Large surface area available for multiple fittings, featuring storage space under the deck and a sizeable tank for wider range.

## MOULDED SELF-BAILING DECK ON NEW GENERATION

Ease of use: safety and maintenance user friendly.

## NEW FISH TAIL CONES

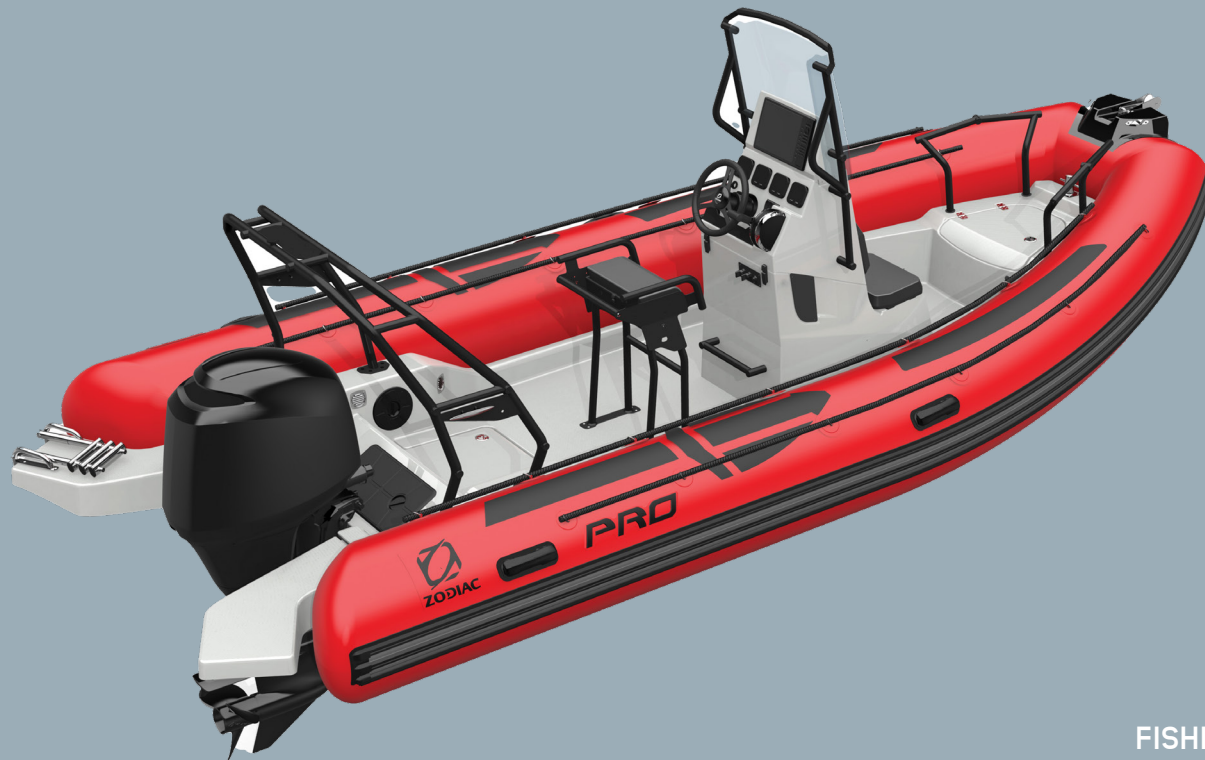
Patented innovation  
Easy access to the bathing ladder.

PRO 6.5

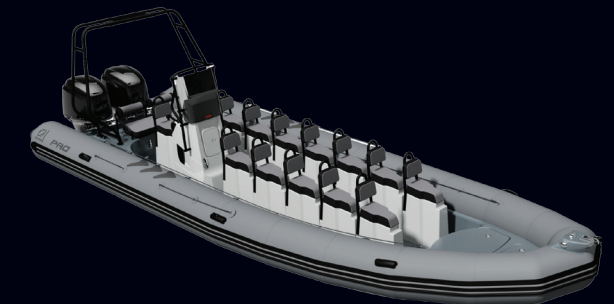


# ADAPTATION

Diving, fishing, water-sports, work or leisure – the Pro adapts. Design the deck layout to suit your lifestyle and preferences.



FISHING



PASSENGER TRANSPORT



EXPLORATION

# WIDE VARIETY

The Pro offers unrivalled layout and personalisation options.

- Numerous colour combinations including hull, tubes, accessories and tank integration
- Position of equipment such as console and seats in your preferred location
- Choice of driving position – either seated or standing
- Models available between 4.2m – 8.5m

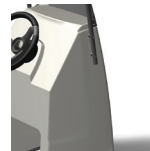


## CONSOLES



Optima 800 console side mount grey/white

Z61451



Optima 800 console grey/white

Z61450



Optima 800 ftc console grey/white (68l/18gal)

Z61452



Jockey console 2 seaters grey/white

Z61247



Pro HL console light/dark grey

Z61727/Z61731



Pro HLS console/seater light/dark grey

Z61728/Z61732



Pro HXL console light/dark grey

Z61729/Z61733

420	•			•		
500		•	•	•		
5.5					•	•
6.5					•	•
7					•	•
750					•	•
850					•	•

## SEATS



Optima 525 seaters white/grey

Z61212



Bolster tube mono

Z61815



Bolster tube double

Z61778



Bolster optima grey/white

Z61236



Bolster pro light/dark grey

Z61720/Z61721



3-Seat bench seat (removable)

Z61726

420	•	•				
500	•	•		•		
5.5		•	•		•	•
6.5		•	•		•	•
7		•	•		•	•
750		•	•		•	
850		•	•		•	



**Pro HXLS console/seater**  
light/dark grey

Z61730 /Z61734



**Optionnal instrumental panel for HL console**  
light/dark grey

Z61735/Z61737



**Optionnal instrumental panel for HXL console**  
light/dark grey

Z61736/Z61738



**Upper handrail**  
HL/HLS console

Z61637



**Console foot rest**  
(unit)

Z61639

420					
500					
5.5	•	•	•	•	•
6.5	•	•	•	•	•
7	•	•	•	•	•
750	•	•	•	•	•
850	•	•	•	•	•



**3-Seater bench seat**  
(fixed)

Z61739



**Jockey seat pro**  
1 seater light/dark grey

Z61722/Z61723



**Bolster's backrest**  
pro

Z61650



**Front handle for jockey seat**

Z61675

420				
500				
5.5		•	•	•
6.5		•	•	•
7		•	•	•
750		•	•	•
850	•	•	•	•

**PANORAMIC WINDSCREEN**

Protection against wind and sea spray.

**HANDRAIL**

Wide diameter, comfortable grip, robust and ergonomic.

**INSTRUMENT PANEL**

Large dashboard as standard for all of your instruments plus the choice to go bigger with the optional upper section.

**TIPPING CONSOLE**

Perfect to reduce the height for winter storage.



**EQUIPMENT**

## EQUIPMENT TO ENHANCE COMFORT



28L (7gal) cooler plus  
12/230v  
Z61599

420	
500	
5.5	•
6.5	•
7	•
750	•
850	•

## A FRAMES AND ADDITIONAL EQUIPMENT FRAMES



Roll bar pro (available  
with swim ladder)

Z61149



Roll Bar inox

Z1167/Z61149BK



Roll bar pro (with  
ski mast integrated)

Z61645



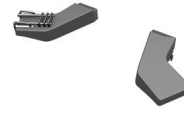
Bow rail/docking  
bit

Z61814



Fishing Pulpit

Z61646



Dark gray rear  
platforms

Z61694/Z61898/  
Z61636



Chainplateslift Kit  
(front)

Z61743



Ski mast

Z61385/Z61385BK

420							•	
500		•					•	
5.5			•	•	•	•	•	
6.5			•	•	•	•	•	
7			•	•	•	•	•	
750	•							•
850	•							•

## T-TOPS



T-top black alu  
(standard)

Z61683



Bimini

Z1088



Mooring cover (boat  
only)

Z61075



Covers (console, bolster,  
back seat)

Z61260/Z61259

420

500

5.5

6.5

7

750

850

HL/HLS

HL/HLS

HL/HLS

HXL/HXLS

HXL/HXLS

•

•

•

•

•

•

•

## ELECTRONICS



Navigation lights red/  
green (on roll bar or  
console)

Z60853



Navigation lights  
(installation on the roll bar)

Z67307

420

500

5.5

6.5

7

750

850

•

•

•

•

•

•

•

•

•

•

•

•



EQUIPMENT



PRO 420    PRO 500    PRO 5.5    PRO 6.5    PRO 7    PRO 750    PRO 850

Length overall/inside (m-f)	4,20/2,90	4,70/3,38	5,40/4,25	6,1/4,94	6,75/5,71	7,50/6,16	8,50/7,45
Width overall/inside (m-f)	1,90/0,95	2,05/1,05	2,54/1,39	2,54/1,39	2,54/1,39	2,90/1,65	3/1,85
Weight (Kg-Lbs)	181	230	430	610	790	860	1450
Number of passengers	7	9	12	15	16	20	25
Max power allowed (CV)	50	70	115	175	250 - 2 x 130	300 - 2 x 150	350 - 2 x 250
Tank capacity (l-gal)	ø	ø	100	200	200	310	400

## STANDARD EQUIPMENT

### HULL

- Deep V fiberglass hull
- Moulded in deck light grey or dark grey
- Anchor locker which can be padlocked
- Stern flush deck locker + 1 front locker
- 2 High volume bailers
- 1 Bow mooring bollard
- 2 Stern cleats (Pro 5.5/6.5/7/750/850)
- Technical area (Pro 5.5/6.5/7/750/850)
- Bilge pump (Pro 5.5/6.5/7/750/850)
- 1 Bow ring
- 2 Towing rings

### TUBE

- Removable tube
- Strongan™ - DUOTEX™ fabric 2x1100 decitex (Pro 420/500/5.5/6.5)
- Hypalon™ - Neoprene™ fabric (Pro 7/750/850; option on Pro 420/500/5.5/6.5)
- GRP bow step incl. anchor roller
- Fish Tail Cones (Pro 5.5/6.5/7)
- Semi-recessed valves Easy Push
- Double grab line
- Anti-slip patches
- Large profile rubstrake
- 4 External handles

### ADDITIONAL EQUIPMENT

- Integrated fuel tank + water/fuel separator (Pro 5.5/6.5/7/750/850)
- Battery switch (Pro 5.5/6.5/7/750/850)
- Bathing ladder
- 2 Paddles
- Foot pump & pressure gauge
- Repair kit
- Owners manual

## COULEURS

	Strongan™	Hypalon Néoprène™	Coque
420/500	Black   Red	Grey	White   Grey
5.5	Red   Black   Grey	Blue   Red   Black   Normal grey   Light grey	Dark grey   Light grey
6.5	Red   Black   Grey	Red   Black   Normal grey   Light grey	Dark grey   Light grey
7		Blue   Red   Black   Normal grey   Light grey	Dark grey   Light grey
750		Red   Black   Normal grey   Light grey	Dark grey
850		Black   Normal grey	Dark grey



PRO 5.5

CONFIGURE  
YOURS



SPECIFICATIONS

# OPEN

## ALL-IN-ONE



OPEN 5.5

Practical | Versatile | Performance







OPEN 7



OPEN 5.5



OPEN 5.5



OPEN 5.5



OPEN 5.5



OPEN 7

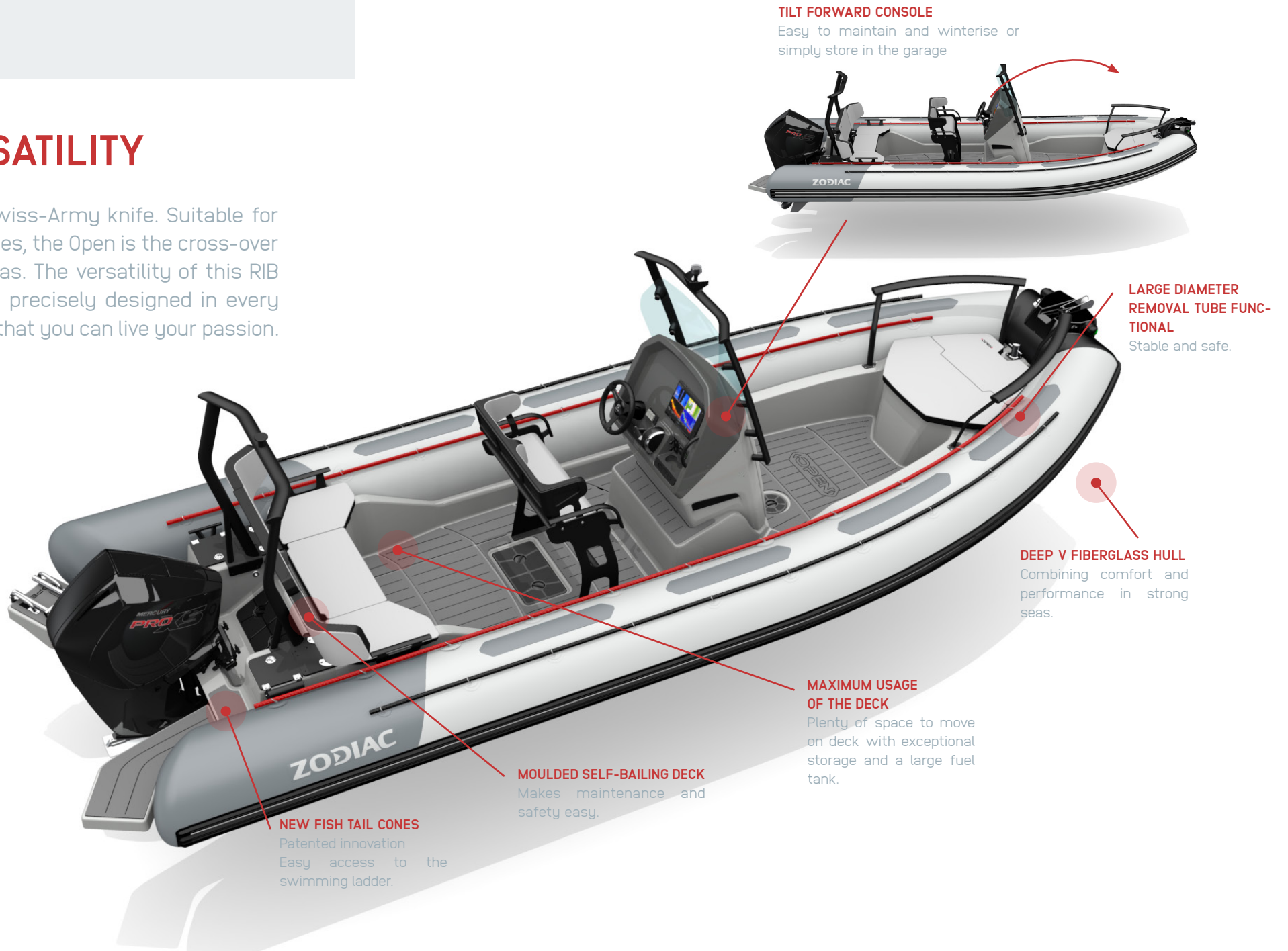


OPEN 7

OPEN

## VERSATILITY

A true Swiss-Army knife. Suitable for all activities, the Open is the cross-over of the seas. The versatility of this RIB has been precisely designed in every detail so that you can live your passion.



### TILT FORWARD CONSOLE

Easy to maintain and winterise or simply store in the garage

### LARGE DIAMETER REMOVAL TUBE FUNCTIONAL

Stable and safe.

### DEEP V FIBERGLASS HULL

Combining comfort and performance in strong seas.

### MAXIMUM USAGE OF THE DECK

Plenty of space to move on deck with exceptional storage and a large fuel tank.

### MOULDED SELF-BAILING DECK

Makes maintenance and safety easy.

### NEW FISH TAIL CONES

Patented innovation  
Easy access to the swimming ladder.

OPEN 7

## 2 TUBE COLORS



**GELCOAT**  
Dark Grey

**HYPALON™-NEOPRENE™**  
Black/light grey

## OPTION: EVA DECK



**GELCOAT**  
Light Grey

**HYPALON™-NEOPRENE™**  
Grey/normal grey



**GELCOAT**  
Light Grey

**STRONGAN™ \***  
Black/light grey



\*except OPEN 7

OPEN 7

OPEN

## PERFORMANCE

The v-hull and optimised deck plan ensures excellent stability at sea and better movement on-board for cruising. With the perfect balance between performance and comfort, you can enjoy a day on the water whatever your passion.



OPEN 6.5



OPEN 5.5



OPEN 7



OPEN 55



OPEN 7

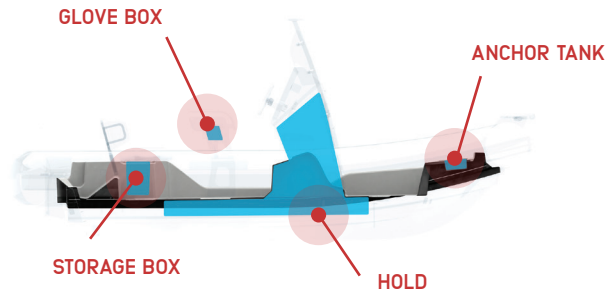


OPEN 55

OPEN

## PRACTICAL

The optimisation of the under-deck storage areas on the Open 7 offer 1250 litres of space for your chosen activities. Whether its skiing, fishing or scuba diving, choose your activity depending on your mood rather than space.







# OPEN ACCESSORIES FOR ALL ACTIVITIES



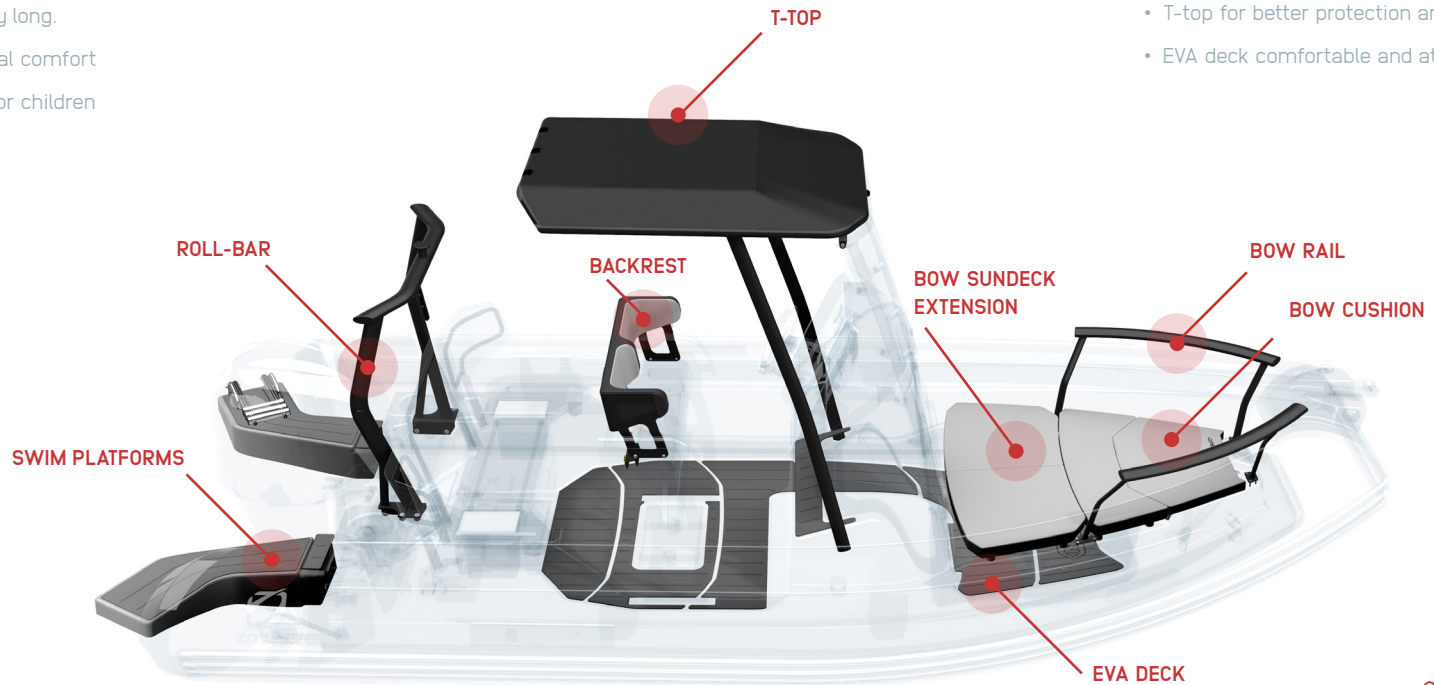
## RELAXATION

- The sundeck extension is a must-have for sunbathing. Sit down comfortably and relax all day long.
- Backrest with lateral blocks for optimal comfort
- Bow and several handrails – perfect for children
- Swim platforms



## WATER SPORTS

- Roll bar/tow bar - high towing point - ideal for watersports.
- Stereo.
- Rear platforms - perfect for diving.
- T-top for better protection and a sporty look.
- EVA deck comfortable and attractive.



## FISHING

- Bow rail
- T-top for protection from the sun and a sporty look.
- Swim platforms - perfect to add space to the aft of the boat and move around safely.



## DIVING

- Swim platforms provide plenty of space for diving preparation.
- EVA deck is comfortable and attractive.



**OPEN 3.1**



**OPEN 3.4**



**OPEN 4.2**



**OPEN 4.8**



**OPEN 5.5\***



**OPEN 6.5\***



**OPEN 7\***

Length overall/inside (m-f)	3.1/2	3.4/2.45	4.2/2.7	4.7/2.92	5,40/4,22	6,10/4,94	6,95/5,714
Width overall/inside (m-f)	1.65/0.71	1.7/1.1	1.9/1.05	2.05/1.05	2,54/1,39	2,54/1,39	2,54/1,39
Weight (Kg-Lbs)	135	155	270	305	585	610	910
Number of passengers	4	4	6	6	12	15	16 (C)/5 (B)
Max power allowed (CV)	30	30	60	80	130	175	250
Tank capacity (l-gal)	24L / 6GAL	24L / 6GAL	46L / 12GAL	46L / 12GAL	100	200	225

**OPEN 6.5\***

**OPEN 7\***

## STANDARD EQUIPMENT\*

### HULL

- Hull polyester in deep V
- Anchor locker
- 2 High volume bailers
- Bollard
- 2 Rear handles for passengers
- 1 Bow mooring bollard and 2 stern cleats
- Bilge pump

### TUBE

- Strongan™ Duotex™ or Hypalon Neoprene™ fabric
- 1670 Decitex
- Fiberglass bow step with anchor roller with fairlead
- Bow chocks
- Fish Tail
- Valves semi-encastées « Easy push »
- Double grab line
- Large profile rubstrake

## OTHER STANDARD EQUIPMENT

- Pilot / co-pilot leaning post, storage
- 14 Gallon (54l) cooler
- Stern seats with removable back rests
- Large dashboard
- Spacious dashboard
- Tilt forward console with front hatch
- Integrated fuel tank + water/fuel separator
- Surface, 12v/USB socket
- Cupholders
- Battery switch
- Navigation lights
- Swim ladder
- Mechanical steering system
- 2 Paddles
- Foot pump & pressure gauge
- Repair kit and owner's manual



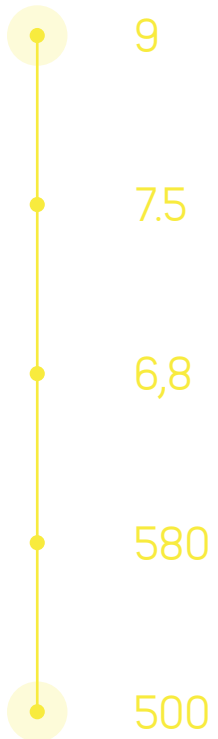
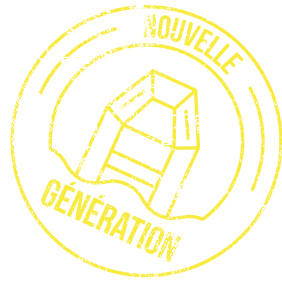
**CONFIGURE  
YOURS**



**SPECIFICATIONS**

# MEDLINE

## PRIVATE OASIS



Space | Relaxation | Leisure







## MEDLINE

### RELAXATION

Perfect for long trips on the sea, the Medline is a true private oasis thanks to its transformable sunbathing area. Created with day trips in mind, the Medline range forms part of the new generation of Zodiac boats.



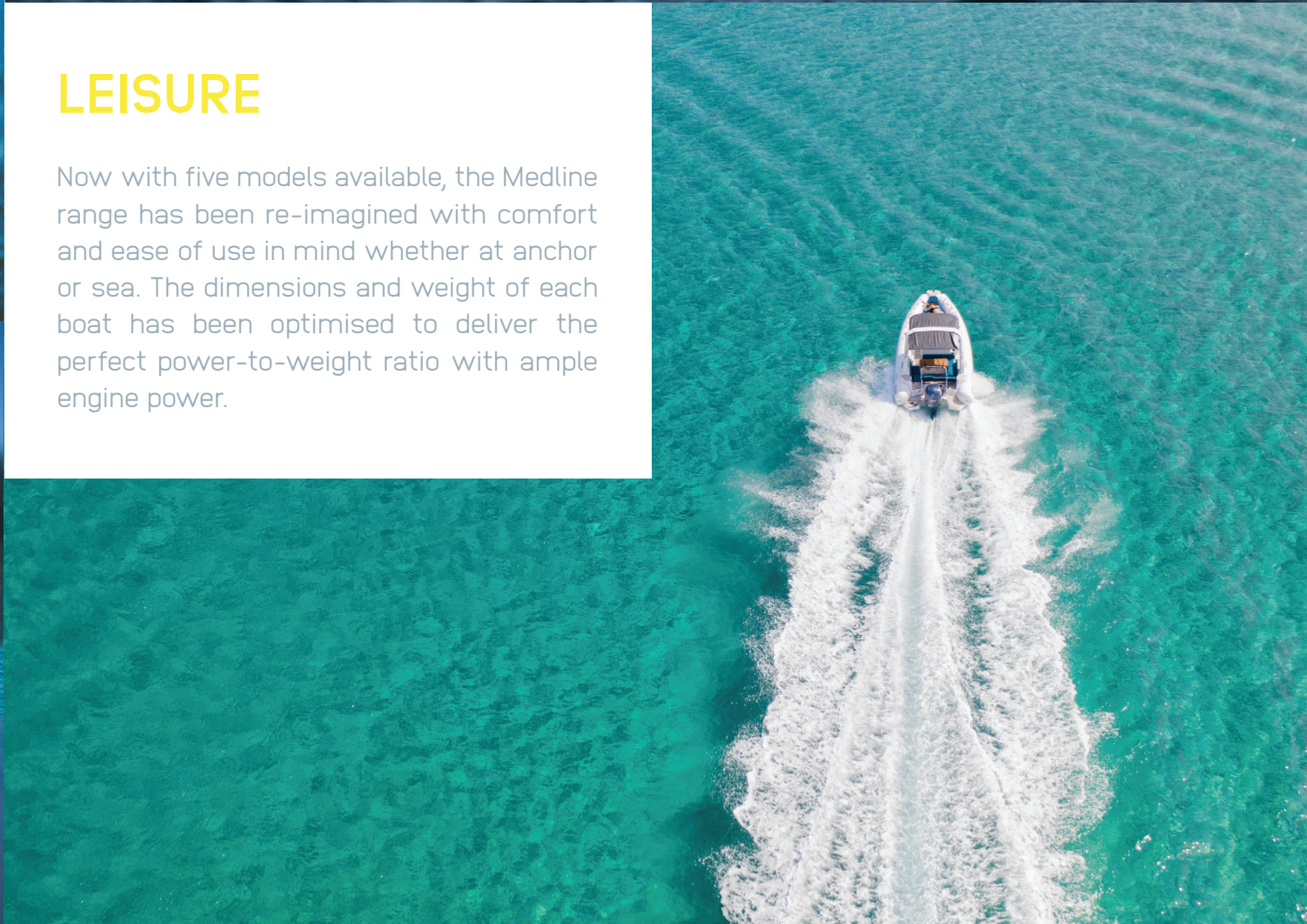
### SPACE

The deck space makes it easy to move around. The forward sun lounge area is spacious and easily set up, as is the aft sun deck. Whether swimming, sunbathing or lunching on the beach, every detail has been designed utilising the vast knowledge and experience of Zodiac Nautic.



## LEISURE

Now with five models available, the Medline range has been re-imagined with comfort and ease of use in mind whether at anchor or sea. The dimensions and weight of each boat has been optimised to deliver the perfect power-to-weight ratio with ample engine power.





# MIX AND MATCH

Choose your GRP, tube and upholstery colour.



## MEDLINE 500

Gel Coat

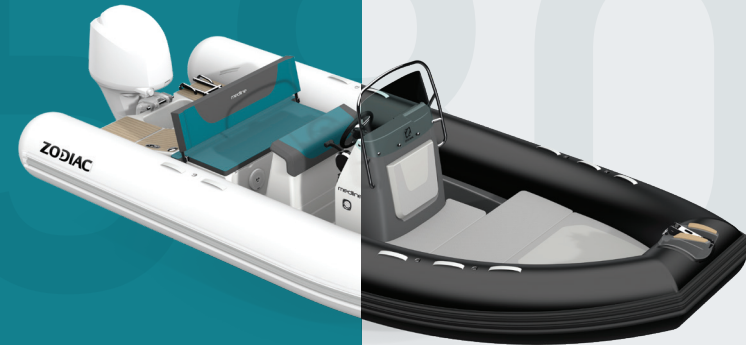


Tube \*



\*Tubes in "carbon" neoprene available in white and black

Upholstery



## MEDLINE 580

Gel Coat



Tube \*



\*Tubes in "carbon" neoprene available in white and black

Upholstery





# MEDLINE 6.8 / 7.5

Gel Coat



Tube \*



\*Tubes in "carbon" neoprene available in white and black

Upholstery



# MEDLINE 9

Gel Coat



Tube \*\*



\*\*Tubes in "carbon" neoprene available in white and black

Upholstery



# NEW : MEDLINE 6.8

Tired of inviting your friends for dinner at home ?

Invite them on the Medline 6.8 !

A spacious relaxation area for unforgettable days on the water.

- Double front and back saloon, convertible to sundeck area
- Up to 14 seats in standard equipment
- Integrated kitchen with sink (optional: Grill)
- Console integrating a habitable cabin with toilets (optional: bunk bed space)
- Triple position bolster for up to two adults + one child
- Rear bathing platforms giving access to the sea





**MEDLINE 500**      **MEDLINE 580**      **MEDLINE 6.8**      **MEDLINE 7.5**      **MEDLINE 9**

Length overall/inside (m-f)	5/4,06	5,80/4,91	6,88/6,34	7,34/6,16	8.90/8.2
Width overall/inside (m-f)	2,24/1,25	2,54/1,44	2,54/1,39	2,90/1,67	3.06/1.86
Weight (Kg-Lbs)	353	601	950	1150	1850
Number of passengers	9	12	14	16 (C) – 6 (B)	20 (C) – 8 (B)
Max power allowed (CV)	80	115	250	300	1x450 / 2x350
Tank capacity (l-gal)	90	90	200	300	400

## INCLUDED STANDARD EQUIPMENT ACCORDING TO THE MODEL

- A fully equipped console
- 2 relaxing spaces
- Rear U-lounge which can be converted to a convivial and relaxing area
- Up to 10 seating places and 14 passengers on board
- 5 lockers
- Safer seats and backrests
- A nice premium quality upholstery, with a "sofa effect" texture which is produced by our partner Serge Ferrari
- 64 colour configurations are available

### MEDLINE 580



#### COMFORT PACK

- Bimini
- Shower kit
- Table



#### PACK SUNNY

- Shower kit
- Ski mast
- Audio Fusion Pack
- Bolster shelf



#### ELEGANCE PACK

- Shower kit
- Table
- Audio Fusion Pack
- Bimini
- EVA deck
- GPS 9" GARMIN
- Sensor/Probe to glue
- Bolster shelf

### MEDLINE 6.8



#### COMFORT PACK

- Front sundeck extension
- Shower kit, handrails,
- Table
- Rear sundeck



#### SPORT PACK

- Ski pole
- Roll bar
- Bimini
- Audio Fusion
- 2 loudspeakers



#### ELEGANCE PACK

- Black console decor
- GPS 9"
- Shower kit
- Ski pole
- EVA deck
- Roll bar + Bimini
- Retractable seat
- Transducer to glue
- Audio Fusion
- 2 loudspeakers
- Table
- Rear sundeck

### MEDLINE 7.5



#### COMFORT PACK

- Kit sunbed cushion
- + Comfort backrest behind bolster
- Sundeck
- Front sundeck extension



#### SPORT PACK

- Ski mast
- Kit Fusion (2 loudspeakers)
- Roll bar
- Slide-up bimini
- Kit sunbed cushion
- + Comfort backrest behind bolster



#### ELEGANCE PACK

- Console decor
- EVA deck
- Courtesy lights
- GPS 9"
- Sensor/Probe to glue
- Kit Fusion + 2 loudspeakers
- Ski mast
- Roll bar grey
- Slide-up bimini
- 2 HP fusion sup
- Kit sunbed cushion +
- Comfort backrest behind bolster
- Rear sundeck

### MEDLINE 9



#### COMFORT PACK

- Ski pole
- Fridge
- Audio Fusion + 4 loudspeakers
- Table + front sundeck



#### SPORT PACK

- Slide-up bimini
- Ski pole
- Roll bar (+ light)
- Audio Fusion + 4 loudspeakers



#### ELEGANCE PACK

- Front balcony
- Slide-up bimini
- GPS Garmin
- Ski pole
- Roll bar (+ light)
- Transducer to glue
- Audio Fusion + 4 loudspeakers
- Table + front sundeck

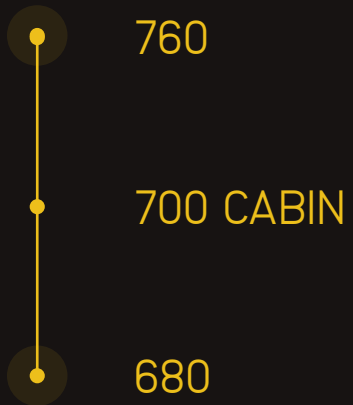
CONFIGURE  
YOURS



SPECIFICATIONS

# N-Z0

## PREMIUM CRUISING

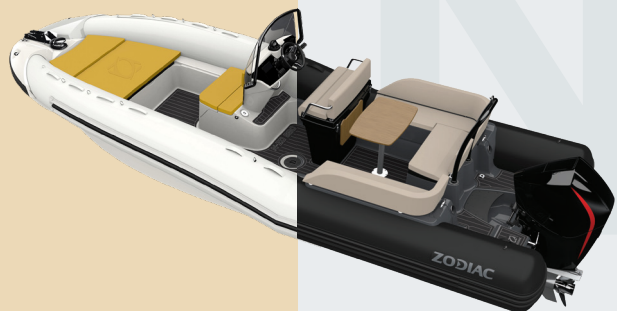


Design | Comfort | Ergonomics



# MIX AND MATCH

Choose your GRP, tube and upholstery colour.



## N-ZO 680

Gel Coat

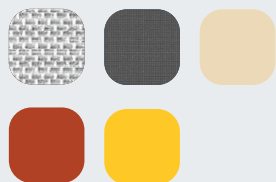


Tube \*



\* Tubes in "carbon" neoprene available in white and black

Upholstery



## N-ZO 700 CABIN

Gel Coat

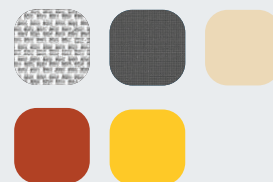


Tube \*

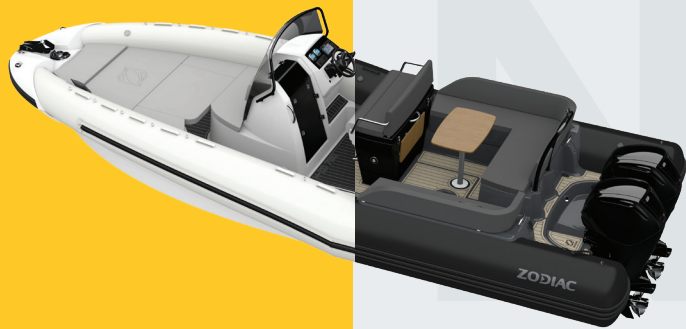


\* Tubes in "carbon" neoprene available in white and black

Upholstery



# N-ZO 760



## Gel Coat



## Tube \*



\* Tubes in "carbon" neoprene available in white and black

## Upholstery





# N-ZO ACCESSOIRES



**N-ZO 680**



**N-ZO 700 CABIN**



**N-ZO 760**

Length overall/inside (m-f)	6,8/5,82	6,99/6,37	7,60/6,38
Width overall/inside (m-f)	2,54/1,30	3,21/2,40	3,04/1,70
Weight (Kg-Lbs)	1058	1489	1530
Number of passengers	14	14	18
Max power allowed (CV)	300	300 - 2 x 150	350 - 2 x 150
Tank capacity (l-gal)	212	310	300

## STANDARD EQUIPMENT

- Integrated fuel tank
- Self-bailing deck when empty
- Front sundeck
- Hydraulic steering
- Navigation lights
- Ski mast arch
- Electric windlass (700 Cabin only)
- Electric toilet and sweet water (700 Cabin only)



## N-ZO 680



### PACK ESSENTIAL

- Standard steering wheel
- Table
- Electric ice box
- Bimini



### PACK SMART

- Premium steering wheel
- Table
- Electric ice box
- Console decor
- Audio Fusion Pack
- Courtesy lights
- Bimini



### PACK DELUXE

- Premium steering wheel
- Table
- Electric ice box
- Console decor
- Audio Fusion Pack
- Courtesy lights
- Bimini
- EVA deck
- Console + bolster gel coat black
- Equipment "Colour Paint Finish" (ski mast + handrail)

## N-ZO 700C



### PACK ESSENTIAL

Standard steering wheel  
Bimini  
Fridge  
Table



### PACK SMART

Premium steering wheel  
Bimini  
Fridge  
Table  
Console  
Audio Fusion Pack  
Courtesy lights  
GPS 7" GARMIN  
Sensor/probe



### PACK DELUXE

Premium steering wheel  
Bimini  
Fridge  
Table + table cushion  
Console decor  
Audio Fusion Pack  
Courtesy lights  
EVA deck  
Console + bolster gel coat black  
Equipment "Colour Paint Finish" (ski mast + handrail + pulpit)  
GPS 7" GARMIN  
Sensor/probe

## N-ZO 760



### PACK ESSENTIAL

Standard steering wheel  
Fridge  
Rear sundeck extension  
Bimini



### PACK SMART

Premium steering wheel  
Fridge  
Rear sundeck extension  
Bimini  
Console decor  
Audio Fusion Pack  
Courtesy lights  
GPS 7" GARMIN  
Sensor/probe



### PACK DELUXE

Premium steering wheel  
Fridge  
Rear sundeck extension  
Bimini  
Console decor  
Audio Fusion Pack  
Courtesy lights  
EVA deck  
Console + bolster black  
Equipment "Colour Paint Finish" (ski mast + handrail)  
GPS 7" GARMIN  
Sensor/probe

**CONFIGURE  
YOURS**



**SPECIFICATIONS**

# eJET 450

100%  
ELECTRIC

no oil,  
no fuel,  
no maintenance



# 100% ELECTRIC

With the development of eJET 450, Zodiac Nautic is doubling down on its commitment to keep exploring the future of the boating industry. Together with the world leader in marine electric propulsion, Torqeedo, which produces the electric engine Deep Blue 50kW and with the latest generation of automotive battery (BMW) 40kWh, eJET 450 gets 90 min of range at 24 knots (8 hours at 5 knots). It achieves a max speed of 30 knots thanks to the revolutionary HydroJet technology which is entirely made from composite materials and requiring no maintenance. The eJET has a high-quality Neoprene tube, exceptional retractable seating, and upholstery by Serge Ferrari, with a quilted finish sewn in France by hand.



**2 m**  
Width



**4,50 m**  
Length



**1h30 at 25 knots**  
Autonomy



**30 knots**  
Maximum speed



**80i/50 kW**  
Torqeedo Deep Blue electric motor



**6+1**  
Maximum people



**10 hours**  
Recharge time

# TENDERS

— RIGID-HULLED INFLATABLE —

SEMI  
RIGIDI  
**YACHTLINE**  
Yacht line deluxe



2 METERS

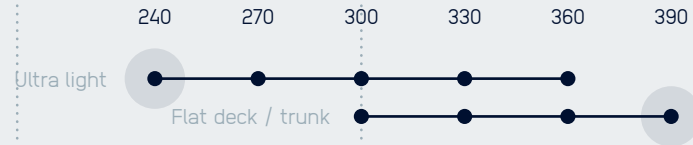
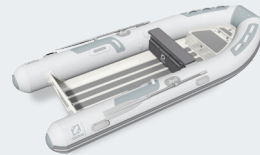
3 METERS

4 METERS

5 METERS

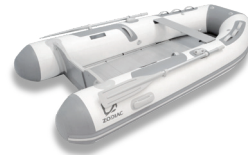


**CADET RIB ALU**  
Lightness and strength



— FOLDABLES —

**CADET**  
The market reference



56



**RIGID-HULLED**  
YACHTLINE  
CADET RIB ALU

62



**FOLDABLES**  
CADET

# YACHTLINE

## YACHT LINE DELUXE



Luxury | Fun | Performance





## YACHTLINE

The YACHTLINE RIB tender range enhances style, equipment and comfort. Their compact size allows for easy platform or fly bridge storage without compromising on seating. The design of the boarding steps also ensures maximum stability when getting on-board.

The YACHTLINE hull with integrated wings has been designed to perform with the most powerful four-stroke engines. It has the characteristics to allow for a multitude of activities on the water to create the perfect partner for your yacht.





**360**

**400**

**440**

**490**

Length overall/inside (m-f)	3.60/2.00	4.00/2.40	4.40/2.80	4.90/2.98
Width overall/inside (m-f)	1.77/0.86	1.77/0.86	1.86/0.94	2.05/1.05
Weight (Kg-Lbs)	200	218	273	390
Number of passengers	4	5	6	9
Max power allowed (CV)	40	50	50	90
Tank capacity (l-gal)	35	35	57	85

## STANDARD EQUIPMENT

### HULL

Polyester hull in V shape with integrated wings  
 Non-slip counter-molded deck  
 Multiple lockers

### TUBE

Choice in fabric: neoprene 1100 decitex, or Strongan™  
 Duotex™ 2 x 1100 decitex (except 490)  
 Removable tube  
 Easy-Push valves  
 Handles  
 Large-profile rubbing strake  
 Cone reinforcements

## STANDARD EQUIPMENT

Console with steering, 3 switches, glove box,  
 12/V USB plug  
 Integrated fuel tank + gauge + water/fuel separator  
 Bow step with integrated navigation lights,  
 courtesy LEDs  
 and retractable cleat  
 Lateral boarding steps  
 Entire upholstery  
 2 stainless steel mooring cleats  
 3 lifting points  
 Deck lighting  
 Navigation lights  
 Battery switch  
 Automatic bilge pump

## OPTIONAL ACCESSORIES

Lifting slings  
 Backrest  
 Windscreen  
 Mooring cover / Protection cover  
 Ski mast (490)  
 Lateral swimming ladder



# SPECIFICATIONS

# TENDERS

## RIGID-HULLED



## CADET RIB ALU

### Lightness and robustness

Zodiac Nautic has completed its tender range with a new series of aluminium hulls. These ultra-light tenders are easy to handle and have a low impact on the davits of your boat. The large diameter tubes ensure stability and the ability to plane quickly so everything in your boat remains safe and dry.



# CADET

## The market's standard

Setting the industry's benchmark, the Cadet range utilises top quality materials and assembly systems to guarantee resistance and durability. With a complete range of accessories available, you can find top Zodiac Nautic patented products such as rowlock and its tridimensional adjustment or the internal command drain plug to make your inflatable safer to use. Available in three floor options (depending on model size) to suit your load requirements.



### MODELS

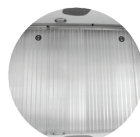
200	230	270	310	350
Aero	Aero	Aero	Aero	Aero
Roll up	Roll up	Roll up	×	×
×	×	Alu	Alu	Alu



Aero



Roll up



Alu

# ZODIAC NAUTIC SERVICES

## AN INTERNATIONAL NETWORK OF TRUST

Present in more than 50 countries around the world, Zodiac Nautic and its 1.600 Agents will put their expertise at your service. Our network guarantees an efficient and reliable after-sale service: whether you need a new accessory or replacing a lost part, you are sure to find a Zodiac Nautic dealer putting their skills to work for you. **Our agents sometimes do the maintenance of the same boat for more than 20 years!**

Do not hesitate to consult them: they will know how to advise you when buying your boat or upkeeping it. We count on them, they deserve your trust.

Find our dealers:

[WWW.ZODIAC-NAUTIC.COM](http://WWW.ZODIAC-NAUTIC.COM)

\*CADETS = 2 years of warranty. Check the conditions and geographical application zones with your dealer.

N-ZO, MEDLINE, PRO, OPEN, YACHTLINE = 5 years of warranty underlying conditions (2 years upon purchase + 3 years upon registration to the ZODIAC Club). Check the conditions and geographical application zones with your dealer.

WARRANTY\*

5  
YEARS

ZODIAC







# ZODIAC NAUTIC WORLD

THE ZODIAC NAUTIC WORLD IS YOURS

#ZODIACBOAT



VISIT  
OUR WEBSITE



# BOATS SPECIFICATIONS

N ZO			MEDLINE					
680	700 cabin	760	500	580	68	75	9	

## DIMENSIONS (METERS – FEET)

Length overall (m - f)	6,8 - 22'4"	6,99 - 22'11"	7,60 - 24'11"	5 - 16'5"	5,80 - 19'	6,88 - 21'8"	7,34 - 24'1"	8,9 - 29'2"
Inside length (m - f)	5,82 - 19'1"	6,37 - 20'11"	6,38 - 20'11"	4,06 - 13'4"	4,91 - 16'1"	6,34 - 20'8"	6,16 - 20'3"	8,2 - 26'1"
Width overall (m - f)	2,54 - 8'4"	3,21 - 10'6"	3,04 - 9'12"	2,24 - 7'4"	2,54 - 8'4"	2,54 - 8'4"	2,90 - 9'6"	3,06 - 10'
Inside width (m - f)	1,30 - 4'3"	2,40 - 7'10"	1,70 - 5'7"	1,25 - 4'1"	1,44 - 4'9"	1,39 - 4'7"	1,67 - 5'6"	2,03 - 6'8"
Buoyancy tube diameter (m - f)	0,60 - 2'0"	0,65 - 2'2"	0,65 - 2'2"	0,50 - 1'8"	0,55 - 1'10"	0,57 - 1'11"	0,6 - 1'12"	0,6 - 1'12"
Hull angle	NC	NC	NC	NC	NC	24°	NC	24°

## CAPACITY

Design categories	C + D	B + C +D	B + C	C	C	C	B + C	B+C
Number of passengers (ISO)	14	14 (C+D) - 7 (B)	18 (C) - 7 (B)	9	12	14	16 (C) - 6 (B)	20 (C) - 8 (B)
Maximum authorized payload (Kg - lbs.)	1480 - 3263	2036 - 4489 (C) 1661 - 3662 (B)	2080 - 4585 (C) 1250 - 2755 (B)	1232 - 2716	1420 - 3131	NC	1730 - 3814 (C) 980 - 2161 (B)	NC
Total weight (Kg - lbs.)	1058 - 2332	1489 - 3283	1530 - 3373	353 - 778	601 - 1325	950 - 2094	1150 - 2535	1850 - 4079
Number of airtight compartments	6	6	6	5	5	5	5	7

## ENGINE

Transom length	Extra Long	XXL en mono XL en bi-moteurs	XXL en mono XL en bi-moteurs	Long	Extra Long	Extra Long	Extra Long	1x XXL / 2x XL
Maximum allowed power (Hp)	200	300 - 2 x 150	350 - 2 x 150	80	115	250	300	1x450 / 2x350
Maximum allowed power (kW)	147	221 - 2 x 110	257 - 2 x 110	60	86	NC	220	NC
Maximum allowed weight of engine (Kg-lbs)	393 - 866	393 - 866 2 x 258 - 2 x 569	393 - 866 2 x 258 - 2 x 569	191 - 421	244 - 537	300 - 661,3	385 - 849	460 (2x 348) - 1014 (2x 767)

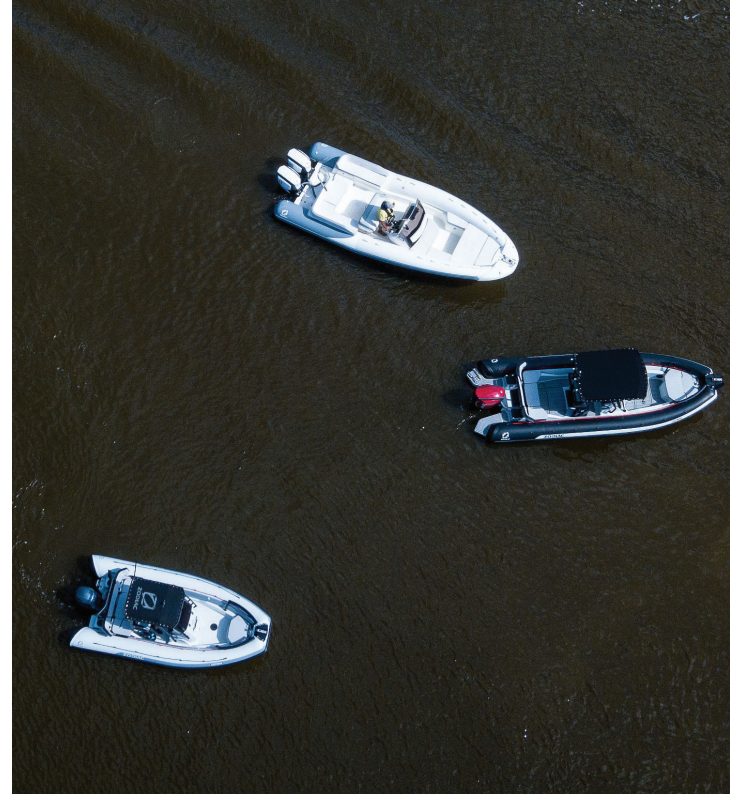


OPEN			PRO						
5.5	6.5	7	420	500	55	6.5	7	750	850

5,40 - 17'9"	6,10 - 20'	6,95 - 22'10"	4,20 - 13'9"	4,70 - 15'5"	5,40 - 17'9"	6,10 - 20'	6,75 - 22'2"	7,50 - 24'7"	8,50 - 27'11"
4,22 - 13'10"	4,93 - 16'2"	5,71 - 18'9"	2,90 - 9'6"	3,38 - 11'1"	4,25 - 13'11"	4,94 - 16'2"	5,71 - 18'9"	6,16 - 20'3"	7,45 - 24'5"
2,54 - 8'4"	2,54 - 8'4"	2,54 - 8'4"	1,90 - 6'3"	2,05 - 6'9"	2,54 - 8'4"	2,54 - 8'4"	2,54 - 8'4"	2,90 - 9'6"	3,00 - 9'10"
1,39 - 4'7"	1,39 - 4'7"	1,39 - 4'7"	0,95 - 3'1"	1,05 - 3'5"	1,39 - 4'7"	1,39 - 4'7"	1,39 - 4'7"	1,65 - 5'5"	1,85 - 6'1"
0,575 - 1'11"	0,57 - 1'11"	0,575 - 1'11"	0,455 - 16"	0,50 - 18"	0,57 - 1'10"	0,57 - 1'11"	0,57 - 1'10"	0,60 - 1'12"	0,60 - 1'12"
24°	24°	24°	19°	22°	24°	24°	24°	22°	24°

C	C	B + C	C	C	C	C	B + C	B + C	B + C
12	15	16 (C) - 7(B)	7	9	12	15	16 (C) - 5 (B)	20 (C) - 7 (B)	25 (C) - 8 (B)
1410 - 3108	1770 - 3902	1990 - 4387 (C) 1400 - 3086 (B)	780 - 1720	1060 - 2337	1550 - 3417	2050 - 4520	1960 - 4321 (C) 1160 - 2557 (B)	1830 - 4034 (C) 1155 - 2546 (B)	2800 - 6173 (C) 2050 - 4519 (B)
585 - 1290	760 - 1676	910 - 2006	181 - 399	230 - 507	430 - 948	610 - 1345	790 - 1741	860 - 1896	1450 - 3197
5	5	5	3	5	5	5	5	5	7

Long	XL	Extra Long	Long	Long	Long	XL Long	XL mono L en bi	XL mono L bi-engine	XXL mono XL bi-engine
130	175	250	50	70	115	175 - 2 x 90	250 - 2 x 130	300 - 2 x 150	350 - 2 x 250
97	131	186	37	52	84	131 - 2 x 66	183 - 2 x 95	220 - 2 x 110	257 - 2 x 183
225 - 496	282 - 622	300 - 661	115 - 253	170 - 374	225 - 496	282 622 - 2 x 220 - 2 x 440	293 - 645	300 - 661 2 x 240 - 2 x 529	393 - 866 2 x 300 - 2 x 661



# BOATS SPECIFICATIONS

YACHTLINE				CADET RIB ALU ULTRA LIGHT VERSION					CADET RIB ALU FLAT/V DECK VERSION			
360	400	440	490	240	270	300	330	360	300	330	360	390

## DIMENSIONS

Length overall	3,60 - 11'10"	4,00 - 13'1"	4,40 - 14'5"	4,90 - 16'1"	2,43-8'	2,73-8'11"	3,03-9'11"	3,33-10'11"	3,63-11'11"	3,00-9'10"	3,30-10'10"	3,60-11'10"	3,90-12'10"
Inside length	2 - 6'7"	2,4 - 7'11"	2,8 - 9'2"	2,98 - 9'9"	1,66-5'5"	1,8-6'3"	2,10-6'11"	2,30-7'7"	2,70-8'10"	2,10-6'11"	2,30-7'7"	2,70-8'10"	3,00-9'84"
Width overall	1,77 - 5'10"	1,77 - 5'10"	1,86 - 6'1"	2,05 - 6'9"	1,67-5'6"	1,67-5'6"	1,67-5'6"	1,67-5'6"	1,67-5'6"	1,67-5'6"	1,67-5'6"	1,67-5'6"	1,67-5'48"
Inside width	0,86 - 2'10"	0,86 - 2'10"	0,94 - 3'1"	1,05 - 3'5"	0,78-2'7"	0,78-2'7"	0,78-2'7"	0,78-2'7"	0,78-2'7"	0,78-2'7"	0,78-2'7"	0,78-2'7"	0,78-2'56"
Buoyancy tube diameter	0,455 - 1'6"	0,455 - 1'6"	0,455 - 1'6"	0,5 - 1'8"	0,41-1'4"	0,41-1'4"	0,41-1'4"	0,41-1'4"	0,41-1'4"	0,41-1'4"	0,41-1'4"	0,41-1'4"	0,41-1'35"

## CAPACITY

Number of passengers (ISO)	4	5	6	9	3	4	4+1	5	6	5	6	6	7
Max. authorized payload (Kg – lbs.)	605 - 1334	735 - 1620	850 - 1874	945 - 2083	298-657	396-873	496-1094	551-1,215	600-1341	463-1021	548-1209	558-1231	643-1418
Total weight (Kg – lbs.)	193 - 426	218 - 481	273 - 602	390 - 860	33-73	37-82	43-95	47-104	50-111	58-128	62-137	68-150	74-164
Nbre of airtight compartments	3	3	3	5	3	3	3	3	3	3	3	3	3

## ENGINE

Transom length	long	long	long	long	short	short	short	short	short	short	short	short	short
Max. allowed power (Hp)	40	50	60	90	6	10	15	15	30	15	15	30	30
Max. allowed power (kW)	30	38	45	68	4,5	8	11	11	22	11	11	22	22
Max. allowed weight of engine (Kg-lbs)	119 - 262	119 - 262	128 - 282	179 - 395	33-73	51-113	56-124	56-124	89-197	56-124	56-124	89-197	89-197

CADET				
200 Roll Up / Aéro	230 Roll Up / Aéro	270 Roll Up / Alu / Aéro	310 Alu / Aéro	350 Alu / Aéro

2,00-6'7"	2,30-7'7"	2,70-8'10"	3,10-10'2"	3,50-11'6"
1,26-4'2"	1,44-4'9"	1,75-5'9"	2,20-7'3"	2,58-8'6"
1,34-4'5"	1,34-4'5"	1,53-5'	1,55-5'1"	1,72-5'8"
0,62-2'	0,62-2'	0,68-2'3"	0,68-2'3"	0,83-2'9"
0,36-1'2"	0,36-1'2"	0,43-1'5"	0,44-1'5"	0,45-1'6"

2	3	3+1	5	6
180/210-397/463	270/300-596/662	370/450/420-816/993/926	600/570-1323/1257	650/620-1433/1367
20-45	22/24-49/53	29/37/31-64/82/69	49/35-109/78	67/42-148/93
2/2+1	2/2+1+1	3/3+1/3+1+1	3+1/3+1+1	3+1/3+1+1

court	court	court	court	court
3	4	4/8/6	15/10	20/15
2	3	3/6/4,5	11/8	15/11
18-40	27-60	27/42/27-60/93/60	55/52-122/115	55-122



The maximum permitted load has been calculated according to the ISO standard.  
This document may refer to registered trademarks of other companies.  
Such references are merely indicative and do not represent a commitment.

Continuously seeking the product improvement, Zodiac Nautic reserves the right to modify or improve the design or the definition of their products at any moment without a prior notification and without retroactive effect on previously constructed boats.

This document cannot be considered as a contractual document.  
Non-contractual pictures.

Warranty extensions are available for certain products and in certain geographical zones. The information is available from your distributor or on [www.zodiac-nautic.com](http://www.zodiac-nautic.com)

Z Nautic reserves the right to modify the characteristics of its products at any time without notice (tolerance +/- 3 % on dimensions, +/- 5% on the weight and speeds).  
Zodiac Nautic™ is a registered trademark - Copyright Zodiac Nautic™. Z Nautic SAS, capital of 7 095 000 Euros - SIRET 812 206 340 000 26 APE 4778C - SIREN 812 206 340 - RCS TOULOUSE N° TVA 81 812 206 340. 2 Chemin de la Val Priout 31450, AYGUESVIVES - FRANCE



**ZODIAC**  
KEEP EXPLORING